

U.S. Army Public Health Center

Army Influenza Activity Report

Week ending 16 January 2021 (week 2)

Influenza Vaccination Coverage*

As of 19 January 2021

86%	Army Active Duty
77%	Army Guard
84%	Army Reserve

*Data Source: MEDPROS

Click to enlarge images.

SUMMARY

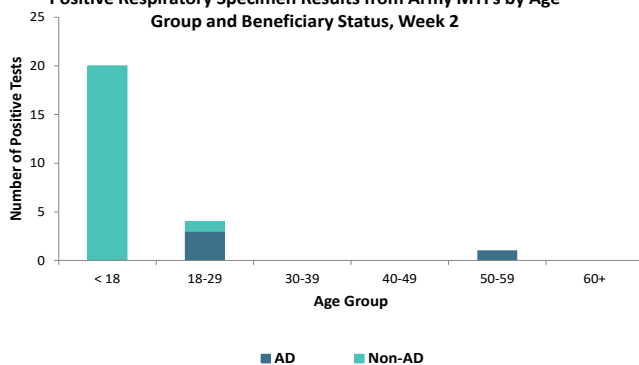
Influenza activity remains low in the Army population. The proportion of positive influenza A specimens for the Army in week 2 is 0.2%, which is significantly lower than that of the 2019-2020 season (19%) for the same time period. No hospitalizations were reported in week 2; the season total thus far is four compared to 102 influenza-related hospitalizations reported as of this time last season. Nationwide, influenza activity is low with 0.1% of specimens tested by clinical laboratories being positive for influenza. Although flu activity is lower than usual, flu vaccines are still recommended.

GEOGRAPHIC SPREAD

Data on the geographical spread of influenza is unavailable this season due to the COVID-19 pandemic. For information from previous seasons and additional information about nationwide influenza surveillance, please visit the Centers for Disease Control and Prevention's website by clicking [here](#).

DEMOGRAPHICS

Positive Respiratory Specimen Results from Army MTFs by Age Group and Beneficiary Status, Week 2

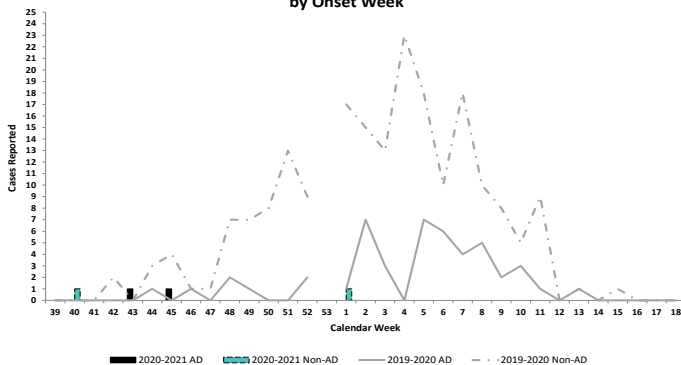


AD: Four positive respiratory specimens were collected from active duty (AD) Service members during week 2; they were collected from individuals in the 18-29 (n=3) and 50-59 (n=1) age groups.

Non-AD: Twenty-one positive respiratory specimens were collected from non-AD individuals during week 2; 95% (n=20) were from those under 18 years of age.

INFLUENZA-ASSOCIATED HOSPITALIZATIONS

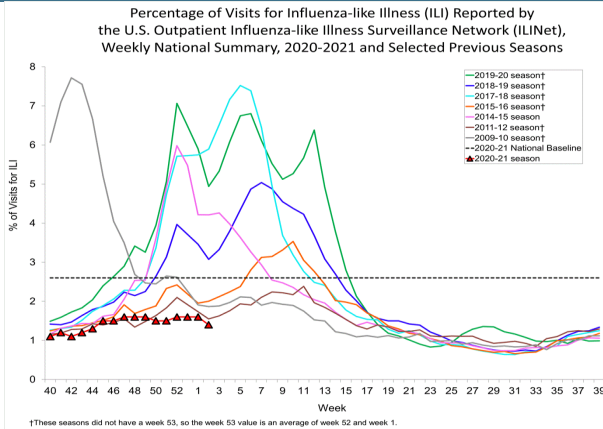
Army Influenza-Associated Hospitalizations Reported in DRSi by Onset Week



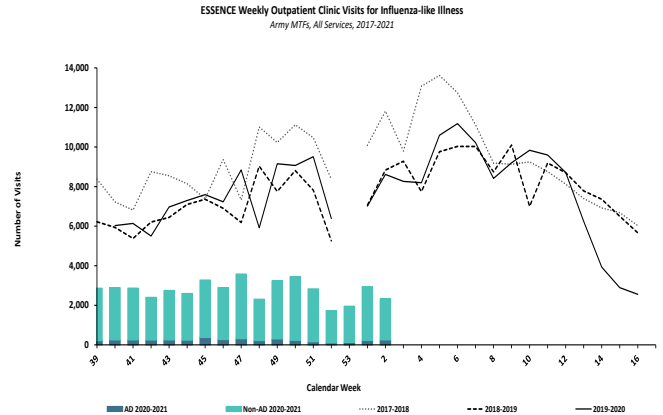
No influenza-associated hospitalizations with onset dates in week 2 were reported to the Disease Reporting System internet (DRSi); four hospitalizations have been reported for the entire season thus far. During the 2019-2020 season, 22 hospitalizations were reported in week 2 (with 102 hospitalizations reported from start of the season through week 2).

*DRSi does not capture cases older than 65 years old for influenza-associated hospitalizations.

ILI ACTIVITY - UNITED STATES

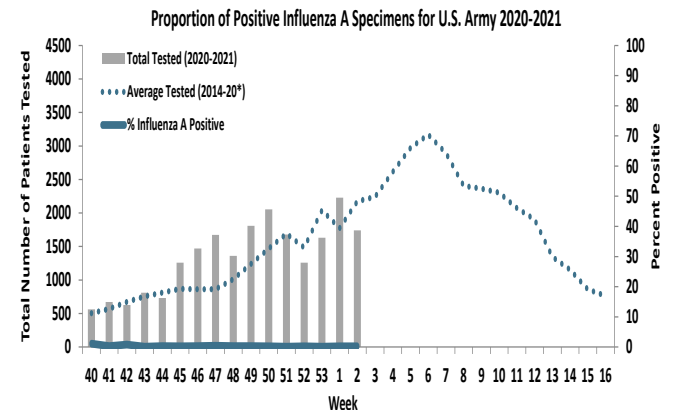
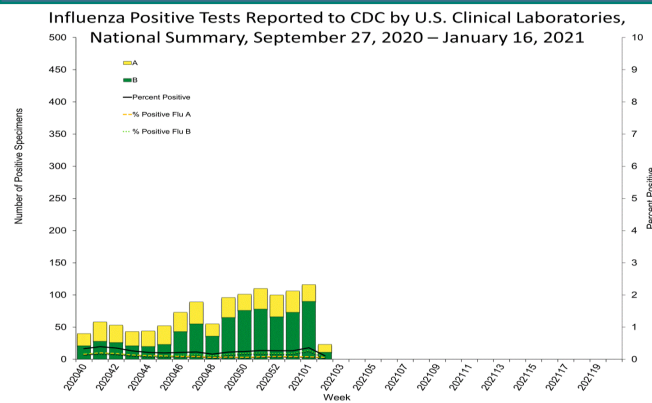


ILI ACTIVITY - ARMY



Nationwide in week 2, incident ILI activity was 1.4%; this is below the national baseline of 2.6%. At Army medical treatment facilities, incident ILI activity decreased by 21% from week 1 to week 2. The majority of ILI encounters (89%) occurred among non-AD patients in week 2.

LABORATORY RESPIRATORY SPECIMEN TESTING



Nationwide during week 2, a total of 21,244 specimens were tested for influenza by select clinical laboratories and sub-mitted to CDC; 23 (0.1%) were positive. Influenza A accounted for 52% of the total positive specimens. In the Army population, 0.2% of 1,741 specimens tested for influenza A were positive in week 2.

		Week 52	Week 53	Week 1	Week 2	Season Total
Army MTF Laboratory Results, 2020-21	Influenza A	2	2	4	4	63
	Influenza B	2	3	3	3	62
	Adenovirus	5	1	1	3	54
	Enterovirus	11	18	17	14	211
	Parainfluenza	0	0	0	0	7
	RSV	2	0	1	1	31
	Negative	2,799	3,565	4,651	3,820	51,151
	Total	2,821	3,589	4,677	3,845	51,579

Of the 3,845 specimens tested in week 2, 1% (n=25) were positive for any type of respiratory illness. Rhinovirus/enterovirus accounted for 56% (n=14) of positive specimens, influenza A for 16% (n=4), influenza B and adenovirus each accounted for 12% (n=3), and respiratory syncytial virus (RSV) accounted for 4% (n=1).

Additionally, the reported number of specimens tested decreased by 18% since week 1 (n=4,677).

Locations providing week 2 laboratory data as of 20 January 2021: Ft Belvoir, Ft Bliss, Ft Bragg, Ft Campbell, Ft Carson, Ft Drum, Ft Gordon, Ft Hood, Ft Jackson, Ft Knox, Ft Leavenworth, Ft Lewis, Ft Riley, Ft Rucker, Ft Sam Houston, Ft Sill, Ft Stewart, Ft Wainwright, Korea, Landstuhl Regional Medical Center, Redstone Arsenal, Tripler Army Medical Center, the U.S. Military Academy, and Walter Reed National Military Medical Center.

LABORATORY RESPIRATORY SPECIMEN TESTING DURING WEEK 2

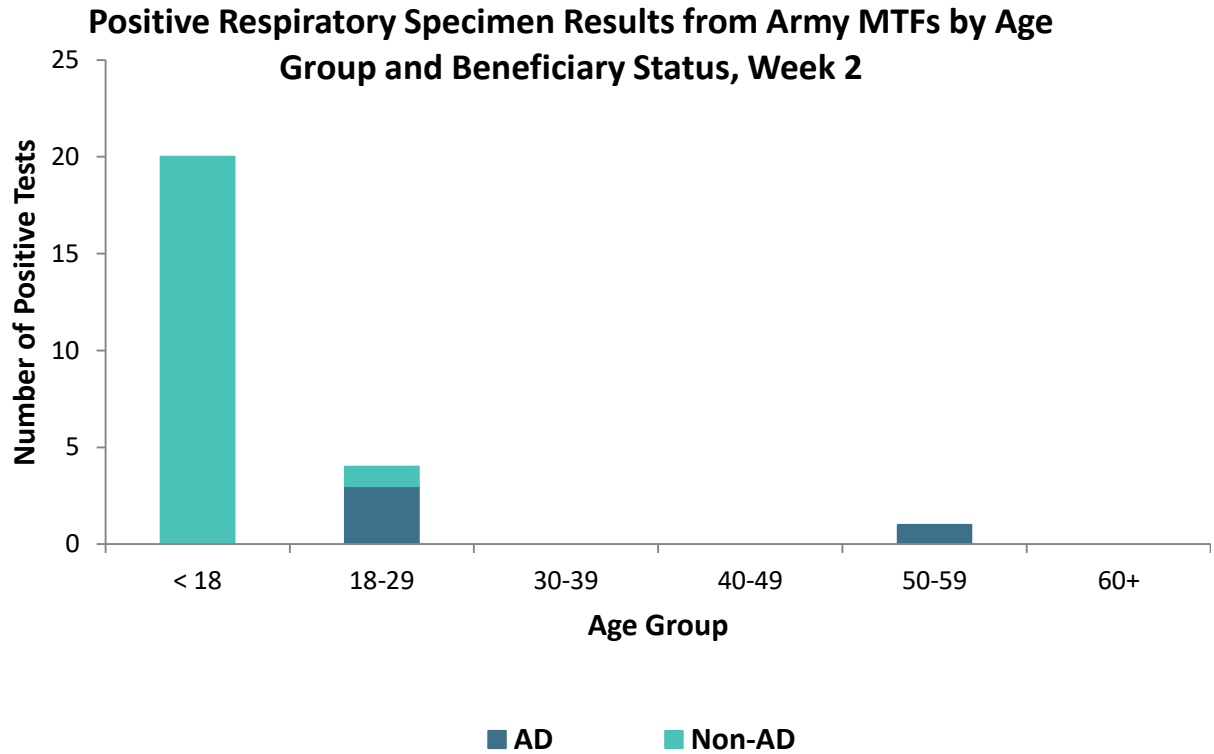
Region	Installation	Influenza A		Influenza B		Adenovirus	
		% Positive	Baseline % Positive	% Positive	Baseline % Positive	% Positive	Baseline % Positive
PHC-A	Ft. Belvoir	0	8.5	0	26.2	0	4.5
	Ft. Bragg	0	9.5	0	100		
	Ft. Campbell	2.9	6.3	0	12.6		100
	Ft. Drum	0	28.6	0			100
	Ft. Gordon	0	12.9	0	15.4		100
	Ft. Jackson	0	25.8	0	4.3		
	Ft. Knox	0	33.3	0	0		
	Ft. Meade	0	40	0			
	Ft. Rucker	0	15.4	0	0		
	Ft. Stewart	0	10.8	0	17.7		100
	Redstone Arsenal	0	10	0	5.9		
U.S. Military Academy	0	25	0	21.2		100	
PHC-C	Ft. Bliss	0	15.1	0.9	23.6		3.8
	Ft. Carson	0	11.2		100		
	Ft. Hood	0	9.8	1.7	8.9	11.1	0
	Ft. Leavenworth	0	34.1	0	10		
	Ft. Polk	4	12.7	0	100		
	Ft. Riley	1.7	50	0	0		
	Ft. Sam Houston	0	20.1	0.1	15.6		100
Ft. Sill	0	25.8	0	100			
PHC-E	Landstuhl Regional Medical Center	0	17.2	0	7.3	0	6.1
PHC-P	Ft. Wainwright	0	6.8	0	25.4		
	Korea	0	40.8	0	1.3	0	1.3
	Tripler Army Medical Center	0	21.8	0	10.7	5.9	0

Region	Installation	Enterovirus		Parainfluenza		Respiratory Syncytial Virus	
		% Positive	Baseline % Positive	% Positive	Baseline % Positive	% Positive	Baseline % Positive
PHC-A	Ft. Belvoir			0	4.4	0	16.1
	Ft. Gordon				100	0	100
	Ft. Stewart					0	8.3
	U.S. Military Academy		100		100		100
PHC-C	Ft. Bliss					0	14.3
	Ft. Carson					7.7	18.8
	Ft. Hood	30		0	0	0	13.7
	Ft. Riley					0	21.2
	Ft. Sam Houston				100	0	100
PHC-E	Landstuhl Regional Medical Center			0	3.5	0	8.9
PHC-P	Ft. Wainwright					0	1.7
	Korea		0	0	2.5	0	4.9
	Tripler Army Medical Center	34.4	0	0	0		100

% Positive: Percentage of positive specimens reported during MMWR week 2, 2020/2021 season.

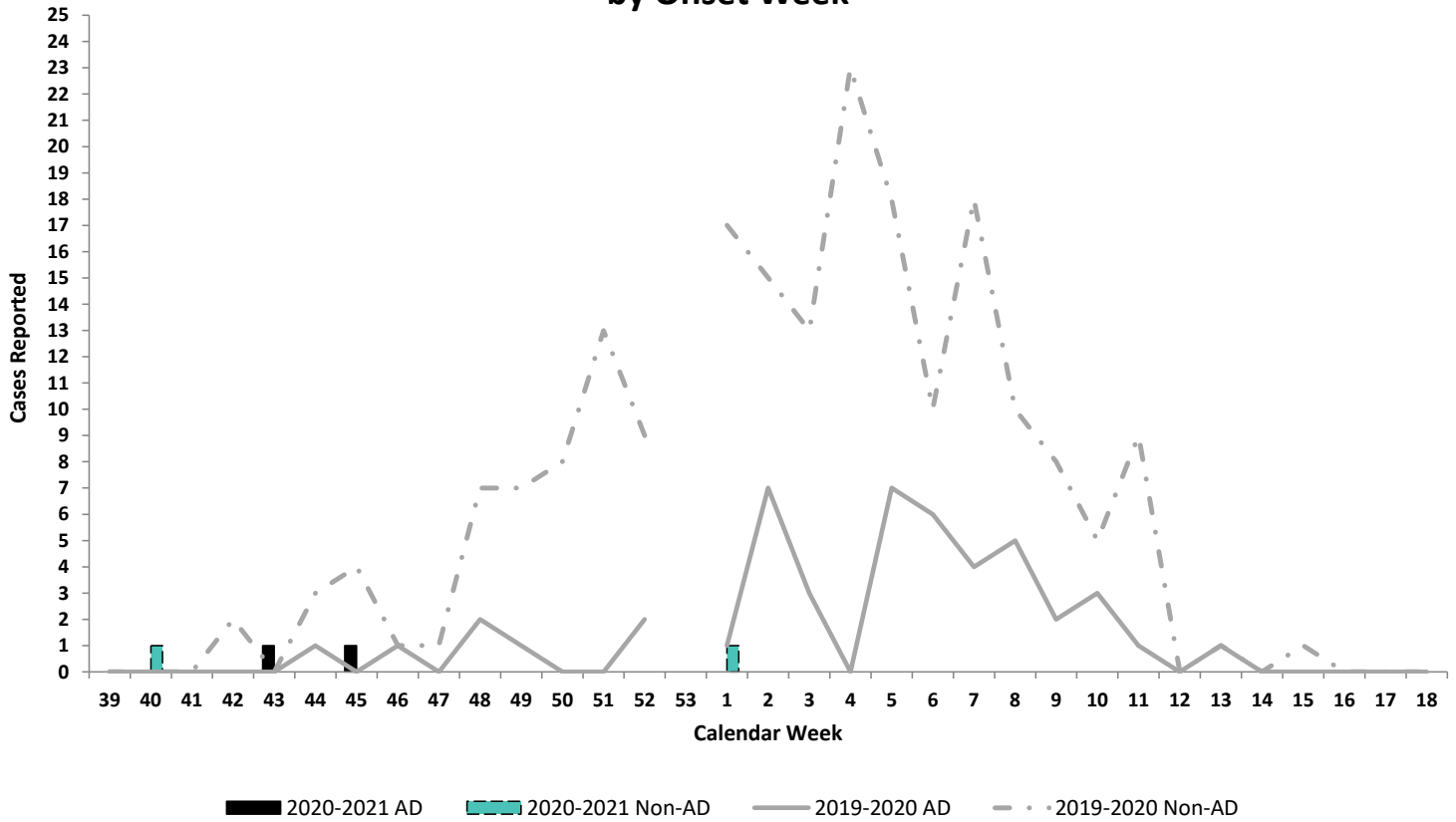
Baseline % Pos.: Percentage of positive specimens reported in MMWR week 2 during influenza seasons from September 2012 - May 2020.

Missing values indicate that specimens were not tested for the disease during the week of interest.





Army Influenza-Associated Hospitalizations Reported in DRSi by Onset Week

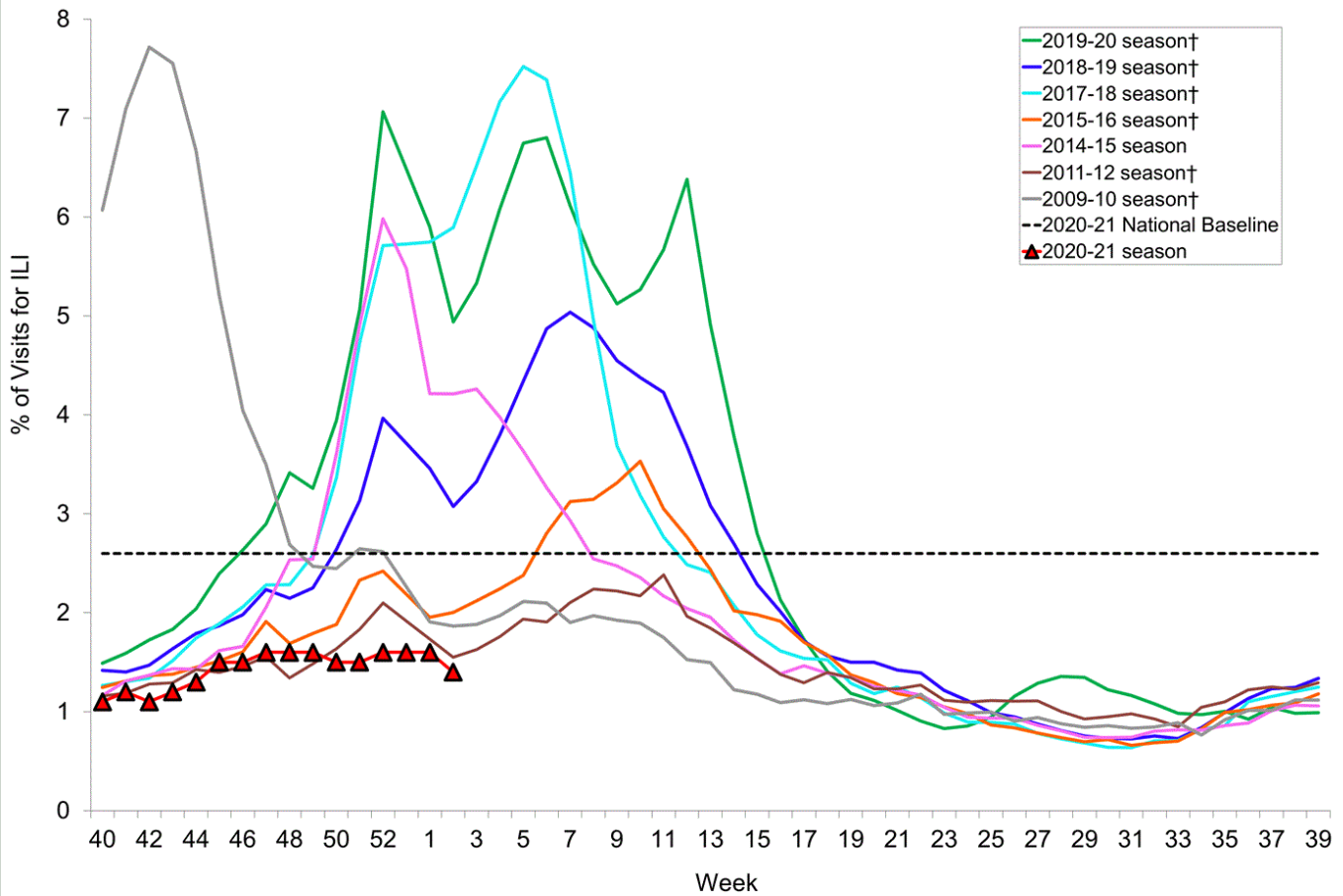


U.S. Army Public Health Center

Army Influenza Activity Report

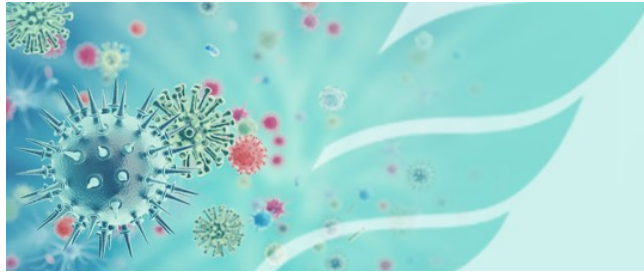
Week ending 16 January 2021 (week 2)

Percentage of Visits for Influenza-like Illness (ILI) Reported by the U.S. Outpatient Influenza-like Illness Surveillance Network (ILINet), Weekly National Summary, 2020-2021 and Selected Previous Seasons



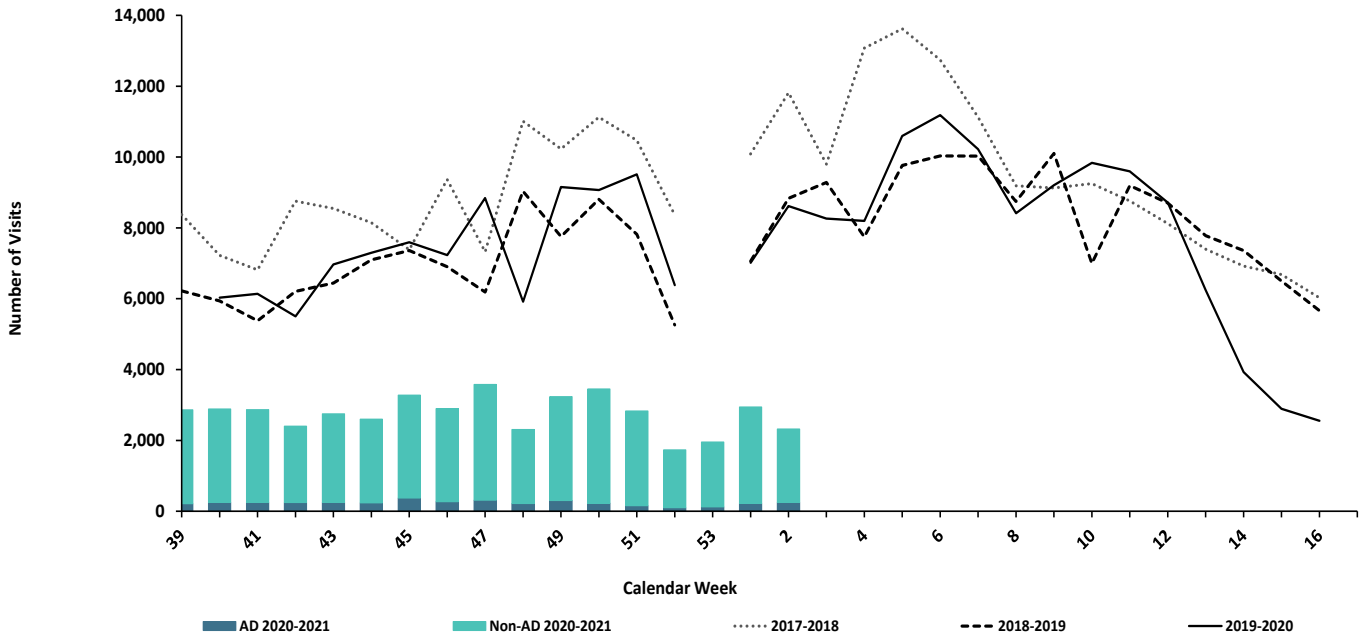
†These seasons did not have a week 53, so the week 53 value is an average of week 52 and week 1.

Source: Centers for Disease Control and Prevention (CDC)

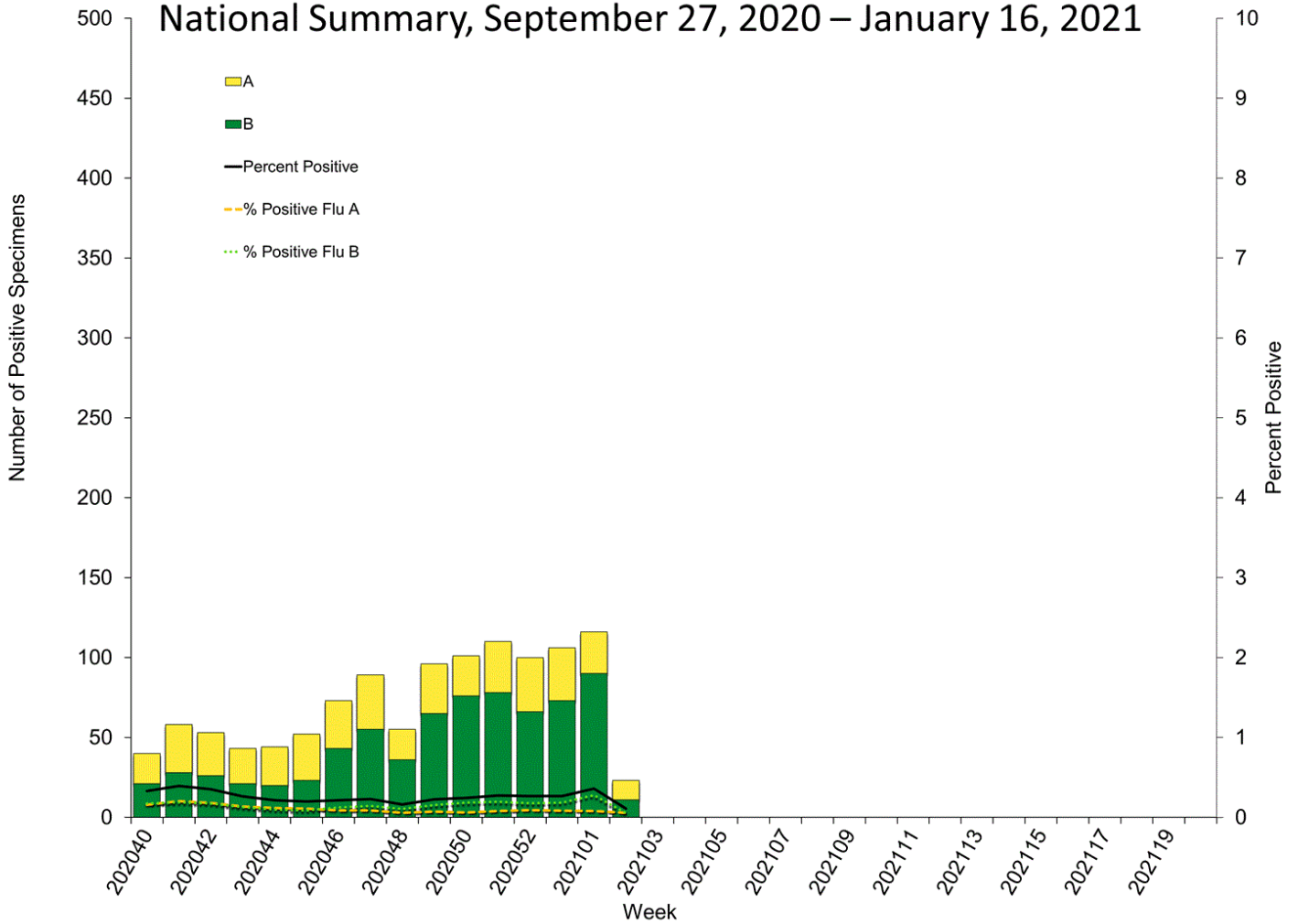


U.S. Army Public Health Center
Army Influenza Activity Report
Week ending 16 January 2021 (week 2)

ESSENCE Weekly Outpatient Clinic Visits for Influenza-like Illness
Army MTFs, All Services, 2017-2021



Influenza Positive Tests Reported to CDC by U.S. Clinical Laboratories, National Summary, September 27, 2020 – January 16, 2021



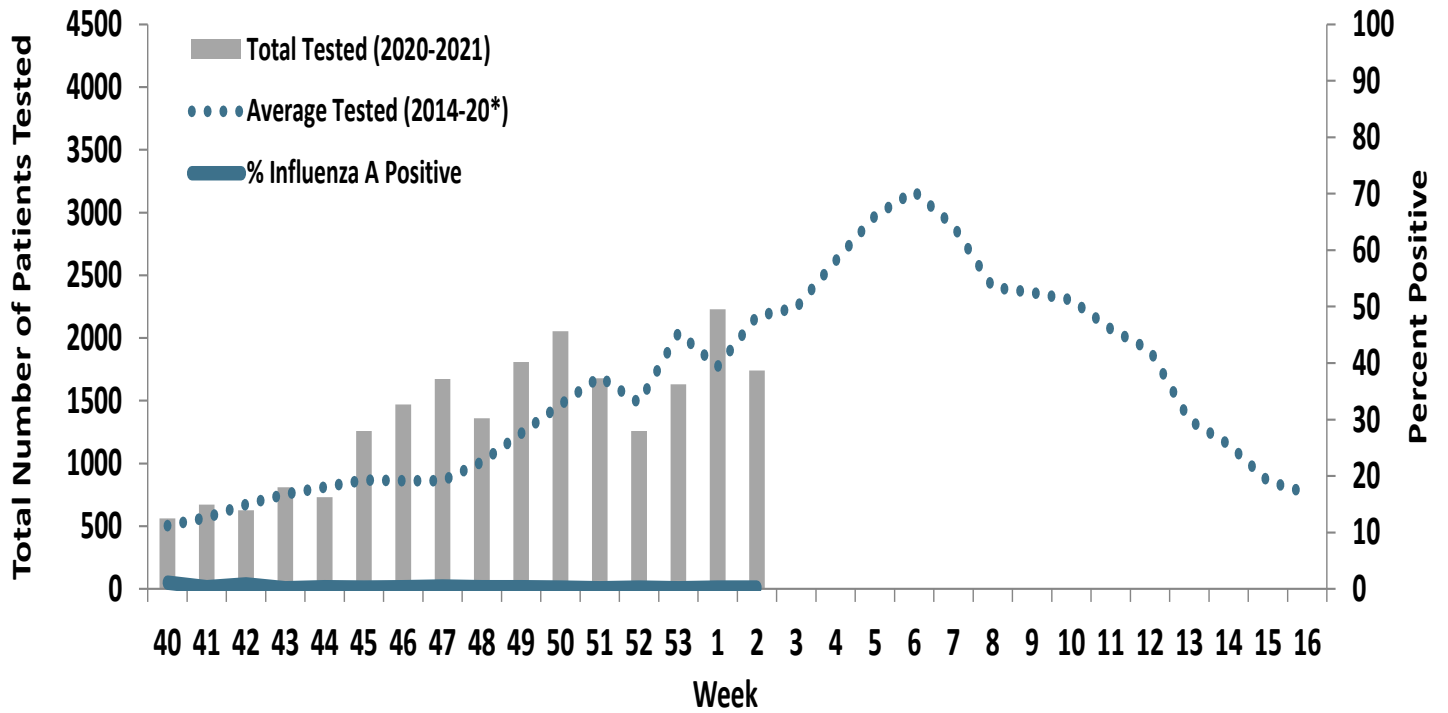
Source: Centers for Disease Control and Prevention (CDC)

U.S. Army Public Health Center

Army Influenza Activity Report

Week ending 16 January 2021 (week 2)

Proportion of Positive Influenza A Specimens for U.S. Army 2020-2021



*2014/2015 influenza season - 2019/2020 influenza season